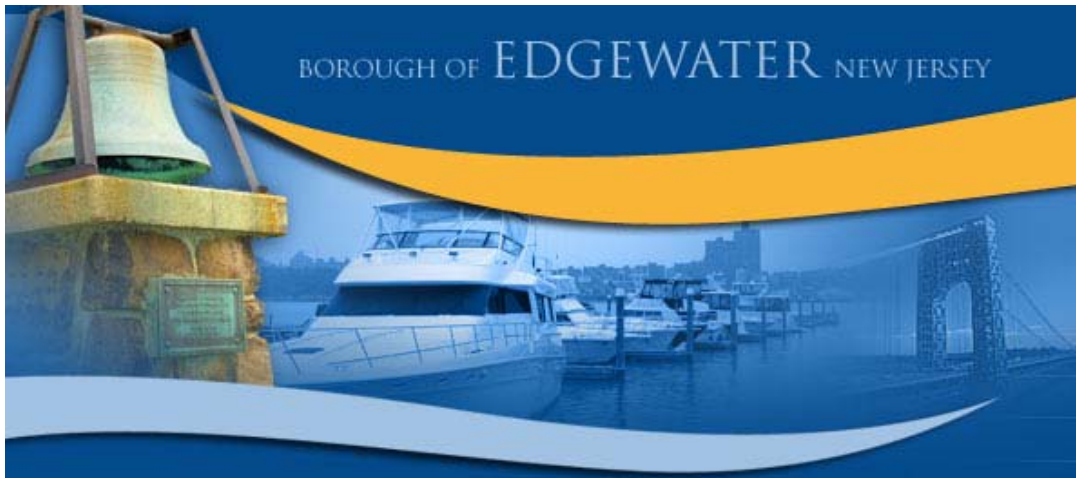


A Detailed Town Report of:

# Edgewater, NJ 07020



**Diane Nielson, Sales Representative**  
20 West Clinton Ave, Tenafly, NJ 07670  
Tel: 201-894-1234 Fax: 201-894-1235  
Res: 201-541-4050 Cell: 201-463-3916

This report is available online  
at: [www.diane-nielson.com](http://www.diane-nielson.com)



# Edgewater, NJ 07020

## Town Information

<b>Town Name:</b>	Edgewater
<b>City Hall:</b>	Edgewater Borough Hall
<b>Address:</b>	916 River Road, Edgewater
<b>Phone Number:</b>	201-943-1700
<b>Government:</b>	Mayor & Council
<b>Type:</b>	Borough
<b>Police Employees:</b>	31
<b>Population:</b>	7,677
<b>Crime Rate (per 1000 people):</b>	
<b>Persons Per Sq Mile:</b>	
<b>Distance to NYC:</b>	9 miles
<b>Website:</b>	<a href="http://www.edgewaternj.org">www.edgewaternj.org</a>

### Parks:

A full time Recreation Director is employed. Facilities include a conservation area, 3 public playgrounds, 1 athletic field, and 1 public tennis court.



**Diane Nielson, Sales Representative**  
20 West Clinton Ave, Tenafly, NJ 07670  
Tel: 201-894-1234 Fax: 201-894-1235  
Res: 201-541-4050 Cell: 201-463-3916

This report is available online  
at: [www.diane-nielson.com](http://www.diane-nielson.com)

# Edgewater, NJ 07020

## Town Information

### Town History:

Edgewater was first settled by the Lenape Indians who traded up and down the Hudson river. They referred to it as kin-nas-na-ki-king.

### Town Meetings:

Meetings are held on 1st & 3rd Mondays, 7 PM @ The Municipal Bldg.

### Real Estate Ordinances:

None Listed

### Public Library

<b>Address:</b>	49 Hudson Ave.
<b>Phone Number:</b>	201-224-6144
<b>Hours:</b>	
<b>Director:</b>	Donna Bachowski
<b>Number of Books:</b>	27,601



**Diane Nielson, Sales Representative**  
20 West Clinton Ave, Tenafly, NJ 07670  
Tel: 201-894-1234 Fax: 201-894-1235  
Res: 201-541-4050 Cell: 201-463-3916

This report is available online  
at: [www.diane-nielson.com](http://www.diane-nielson.com)

# Edgewater, NJ 07020

## Education & School Information

### Public Schools

Superintendent, 201-945-4106, Ted Blumstein, Located at 251 Undercliff Ave

Eleanor Van Gelder School: 201-945-4106, Located at Undercliff Avenue

Leonia Middle School: 201-461-9100, Located at 500 Broad Avenue

Leonia High School: 201-461-7441, Located at 100 Christie Heights

**District Website:**

<http://www.evgschool.org/>

Average Class Size	2003-2004	
	School	State
Pre-K	13.5	13.5
Kindergarten	18.7	19.1
Grade 1	19.7	19.5
Grade 2	20.5	19.7
Grade 3	20.7	20.3
Grade 4	19.7	20.7
Grade 5	16.7	21.7
Grade 6	22.5	22.2
Grade 7	17.7	22.0
Grade 8	21.4	21.8
Grade 9	19.0	21.3
Grade 10	18.9	21.2
Grade 11	14.8	20.1
Grade 12	14.6	20.2
Special Ed. (Ungraded)	9.8	9.3
<b>Total School</b>	15.8	19.4

#### Length of School Day (Leonia High):

(Amount of time school is in session on a normal school day)

**School:** 7 hours: 58 minutes

**State Average:** 6 hours: 34 minutes

#### Instructional Time:

**School:** 6 hours: 44 minutes

**State Average:** 5 hours: 30 minutes

#### Length of School Day (Elementary):

(Amount of time school is in session on a normal school day)

**School:** 6 hours: 40 minutes

**State Average:** 6 hours: 34 minutes

#### Instructional Time:

**School:** 6 hours: 0 minutes

**State Average:** 5 hours: 30 minutes



**Diane Nielson, Sales Representative**

20 West Clinton Ave, Tenafly, NJ 07670  
 Tel: 201-894-1234 Fax: 201-894-1235  
 Res: 201-541-4050 Cell: 201-463-3916

This report is available online  
 at: [www.diane-nielson.com](http://www.diane-nielson.com)

# Edgewater, NJ 07020

## School Information

<b>Student/Computer Ratio:</b>		
(Numbers of students per computer available for the purposes of supervised instruction)		
	School	State Average
<b>2001-02</b>	3.9	4.0
<b>2002-03</b>	3.3	3.9
<b>2003-04</b>	3.4	3.7

<b>Internet Connectivity ( Leonia High School):</b>				
(Percents of room locations in the school that have access to the Internet)				
	2002-03		2003-04	
Locations	School	State Avg.	School	State Avg.
Classroom	100%	94.1%	100%	96.1%
Library/Media Ctrs	100%	99.9%	100%	94.7%
Computer Labs	100%	90.5%	100%	96.5%
All Locations	100%	95.2%	100%	96.1%

<b>Internet Connectivity ( Edgewater Elementary School):</b>				
(Percents of room locations in the school that have access to the Internet)				
	2002-03		2003-04	
Locations	School	State Avg.	School	State Avg.
Classroom	93.9%	95.2%	100%	96.0%
Library/Media Ctrs	100%	98.0%	100%	98.3%
Computer Labs	100%	98.2%	100%	99.3%
All Locations	94.3%	95.8%	100%	96.5%

<b>Language Diversity: (High School):</b>	
(First language spoken at home in order of frequency)	
<b>English</b>	51.8%
<b>Korean</b>	23.7%
<b>Spanish</b>	12.8%
<b>Russian</b>	2.2%
<b>Arabic</b>	1.4%
<b>Japanese</b>	0.7%
<b>Others</b>	7.4%

<b>Language Diversity: (Elementary School):</b>	
(First language spoken at home in order of frequency)	
<b>English</b>	48.4%
<b>Korean</b>	18.2%
<b>Spanish</b>	11.8%
<b>Arabic</b>	5.7%
<b>Mandarin</b>	3.4%
<b>Russian</b>	3.2%
<b>Turkish</b>	1.7%
<b>Others</b>	7.6%



**Diane Nielson, Sales Representative**  
 20 West Clinton Ave, Tenafly, NJ 07670  
 Tel: 201-894-1234 Fax: 201-894-1235  
 Res: 201-541-4050 Cell: 201-463-3916

This report is available online  
 at: [www.diane-nielson.com](http://www.diane-nielson.com)

# Edgewater, NJ 07020

## High School Information

### Advanced Placement Participation

	School	State Average
2001 - 02	21.8%	15.7%
2002 - 03	14.5%	15.8%
2003 - 04	12.4%	28.8%

### Graduation Rate:

	School	State Average
Class of 2003 (2002 - 03)	96.9%	89.4%
Class of 2004 (2003 - 04)	97.5%	90.6%

### Post Graduation Plans

(Percentage of graduating seniors pursuing various self-reported post-high school plans)

Intended Pursuits	Class of 2003	Class of 2004
Four-year College/University	79.9%	71.2%
Two-year College	16.9%	17.8%
Other College		
Other Post-secondary School		
Military		2.5%
Full-time Employment	1.6%	
Part-time Employment		
Unemployed		
Other	1.6%	8.5%

### Dropout Rates

#### 2003 - 04

Percentage of students in grades 9-12 who dropped out during the school year	School	State
White	0.8%	1.1%
Black	5.4%	3.5%
Asian & Pacific Islander	0.0%	0.7%
American Indian & Alaska Native	0.0%	5.3%
Hispanic	0.0%	3.9%
Male	1.1%	2.2%
Female	0.0%	1.6%
<b>Total:</b>	0.6%	1.9%

### Student Expulsions

(Number of students who were expelled)

	School	State Average
2001 - 02	0	97
2002 - 03	0	82
2003 - 04	1.0	102

### Student Suspensions

(Percentage of students who were suspended)

	School	State Average
2001 - 02	4.5%	14.2%
2002 - 03	4.5%	14.2%
2003 - 04	5.0%	14.8%

School Information Furnished by The New Jersey Department of Education at <http://education.state.nj.us>



**Diane Nielson, Sales Representative**

20 West Clinton Ave, Tenafly, NJ 07670  
 Tel: 201-894-1234 Fax: 201-894-1235  
 Res: 201-541-4050 Cell: 201-463-3916

This report is available online at: [www.diane-nielson.com](http://www.diane-nielson.com)

# Edgewater, NJ 07020

## Services Information

Utilities and Services	
<b>Water:</b>	United Water Company
<b>Gas &amp; Electric:</b>	P.S.E. & G.
<b>Health:</b>	Englewood Hospital 350 Engle St. Englewood, NJ 07631 894-3000
<b>Sanitation:</b>	All recyclables except paper may be commingled & must be in plastic containers obtained at the DPW located at 107 Grove Street. Materials placed in plastic bags, cardboard boxes, etc. will not be picked up.

Houses of Worship
Holy Rosary Roman Catholic Church, 26 Edgewater Place, 201-945-6329
First Presbyterian Church, 710 Undercliff Avenue, 201-224-9116

Transportation Information	
<b>Railroads:</b>	NJ Transit, Amtrak
<b>Buses:</b>	NJ Transit, Red & Tan
<b>Major Highways:</b>	9W, Palisades Interstate Parkway, Route 4, Route 17, Garden State Parkway, NJ Turnpike
<b>Airports:</b>	Newark, Kennedy, LaGuardia
<b>Commuter Information:</b>	NYC Transportation – Via NJ Transit to Lincoln Tunnel, Taxi Service Available from: Skyline Car Service & Riverview Car Service



**Diane Nielson, Sales Representative**  
20 West Clinton Ave, Tenafly, NJ 07670  
Tel: 201-894-1234 Fax: 201-894-1235  
Res: 201-541-4050 Cell: 201-463-3916

This report is available online  
at: [www.diane-nielson.com](http://www.diane-nielson.com)

# Edgewater, NJ 07020

## Activities & Groups Information

### Activities Information

Edgewater Little League: 201-224-4941  
Edgewater Republican Club: 201-941-0700 or 201-886-3398  
Police: 201-943-2200  
Fire/Ambulance: 201-943-2200 or 201-943-2600

### Town Groups

Senior Citizens Residence	Pleasant Valley Club
V.F.W.	American Legion
Republican and Democratic Clubs	Scouts
PTO	



**Diane Nielson, Sales Representative**  
20 West Clinton Ave, Tenafly, NJ 07670  
Tel: 201-894-1234 Fax: 201-894-1235  
Res: 201-541-4050 Cell: 201-463-3916

This report is available online  
at: [www.diane-nielson.com](http://www.diane-nielson.com)

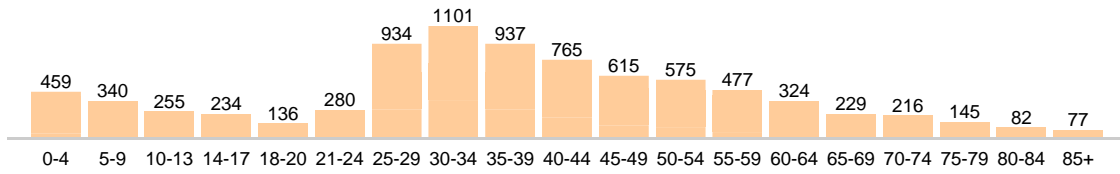
# Edgewater, NJ 07020

## Community Details

### Community Detail for Edgewater, NJ

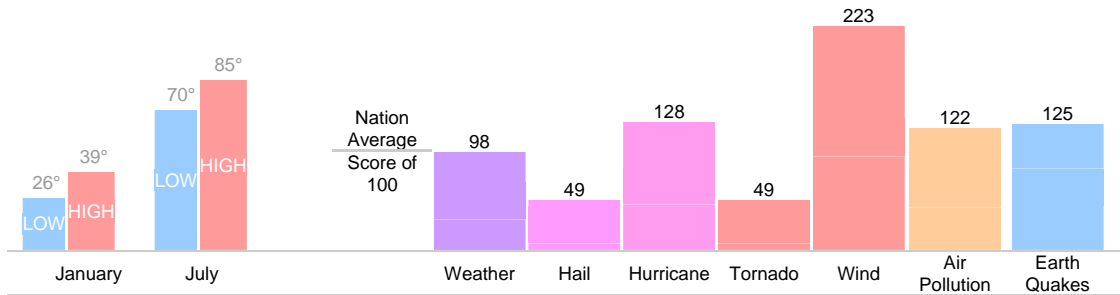
#### Age Demographic

Age Demographic provides a snapshot of the ages of people living in this neighborhood. The number at the top of each bar graph is used to show how many people fall into the age range shown at the bottom of the bar graph.



#### Environment Evaluation

Average high and low temperatures for this neighborhood are provided below. An environmental risk evaluation compares the risk of a weather or geological event that may occur in this neighborhood with the national risk for that event. The national average is marked by a score of 100. The number at the top of the bar graph shows the risk for the event shown at the bottom of the bar graph.



**Diane Nielson, Sales Representative**  
 20 West Clinton Ave, Tenafly, NJ 07670  
 Tel: 201-894-1234 Fax: 201-894-1235  
 Res: 201-541-4050 Cell: 201-463-3916

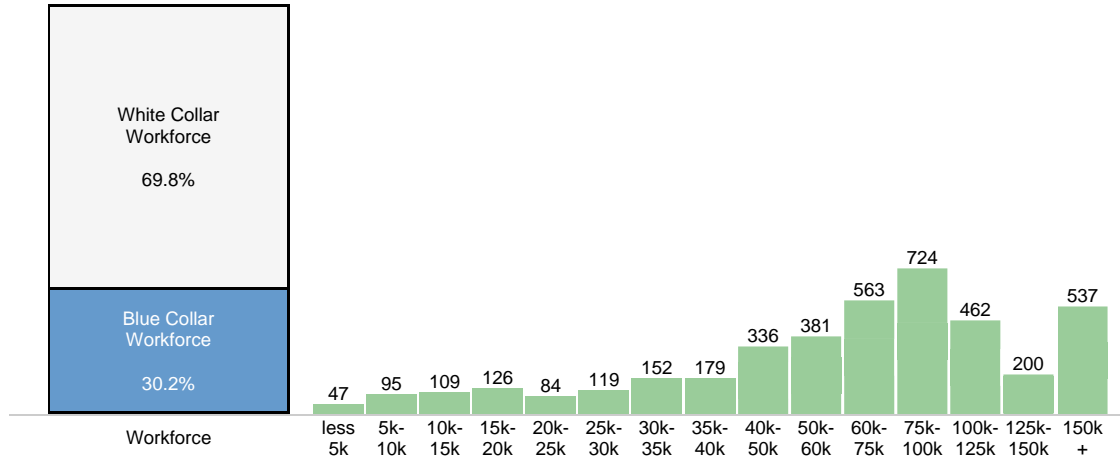
This report is available online  
 at: [www.diane-nielson.com](http://www.diane-nielson.com)

# Edgewater, NJ 07020

## Community Details

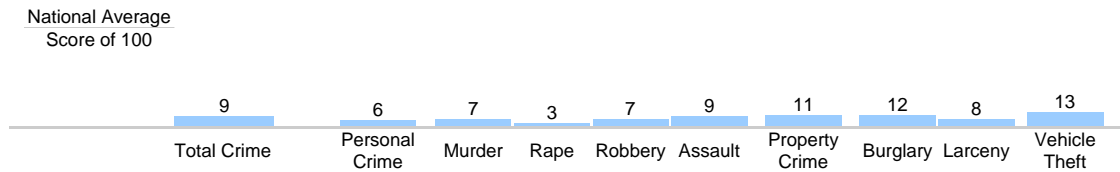
### Wealth Breakdown

Wealth Breakdown provides a snapshot of the incomes of people living in this neighborhood. The number at the top of each bar graph is used to show how many people fall into the income range shown at the bottom of the bar graph.



### Crime Breakdown

Neighborhood Crime Breakdown compares the crime information for this neighborhood with the national average. The national average is marked by a score of 100. The number at the top of each bar graph is used to show how that category compares to the national average.



Source: FBI's Uniform Crime Report (UCR)



**Diane Nielson, Sales Representative**  
 20 West Clinton Ave, Tenafly, NJ 07670  
 Tel: 201-894-1234 Fax: 201-894-1235  
 Res: 201-541-4050 Cell: 201-463-3916

This report is available online  
 at: [www.diane-nielson.com](http://www.diane-nielson.com)